

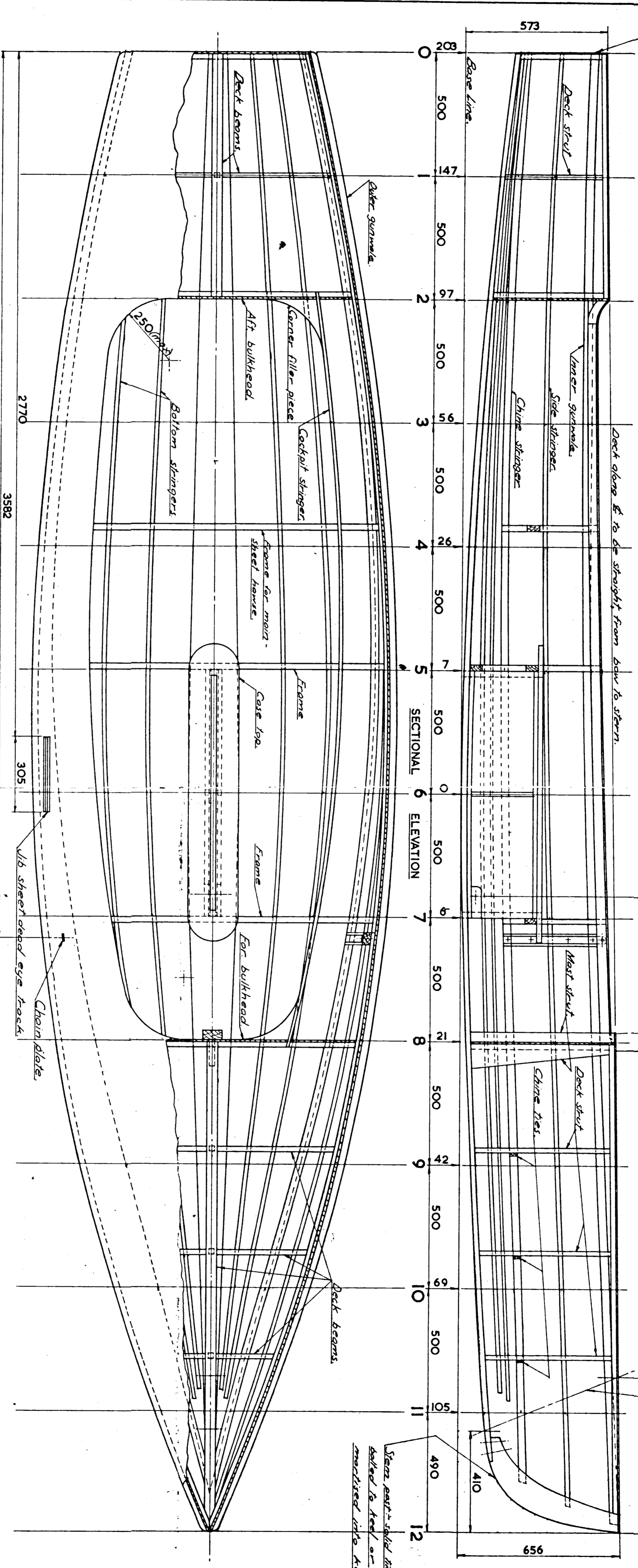
Transom square as shown or slanted  
by setting in of bottom

Deck plating to be straight from bow to stern.

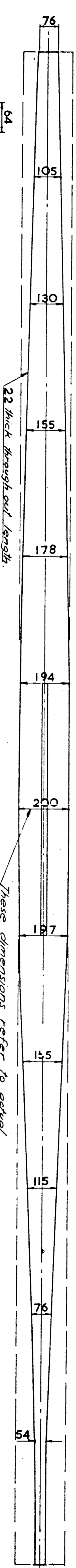
628 front edge of mast  
to centre board pivot

1950 bow to front edge of mast

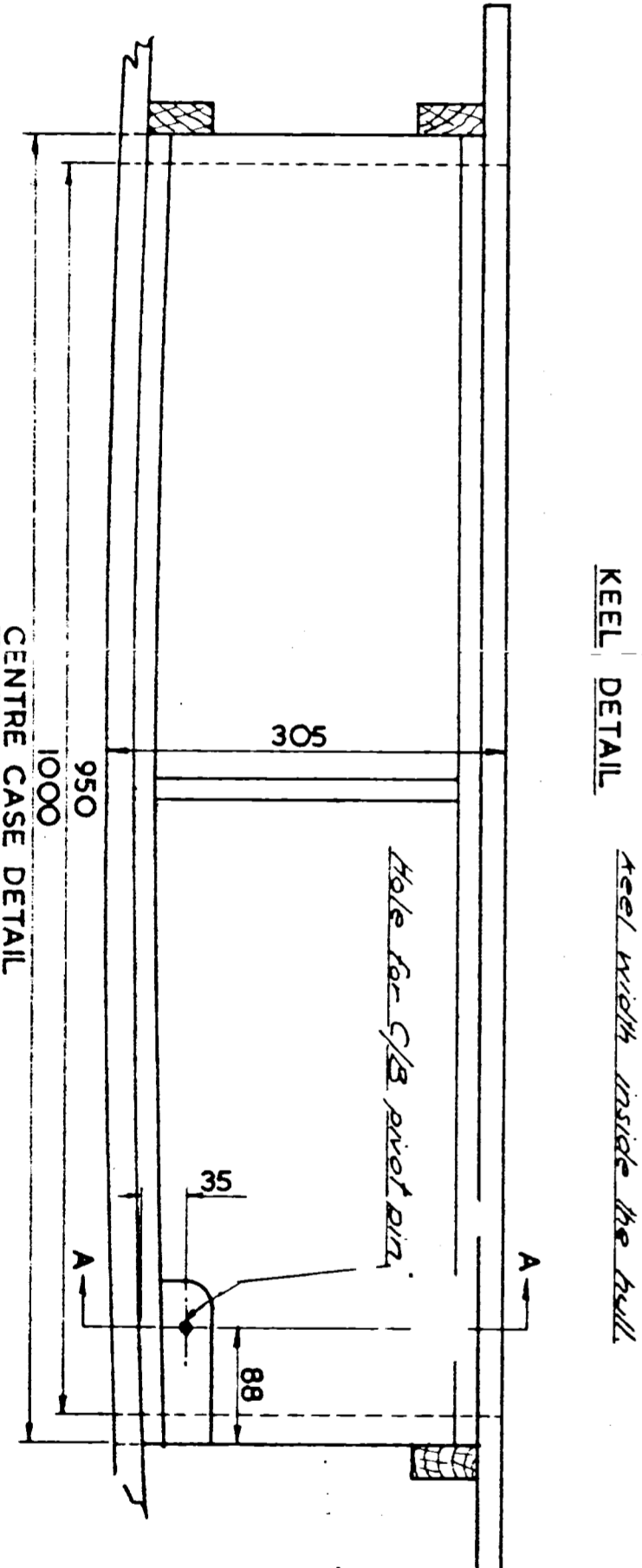
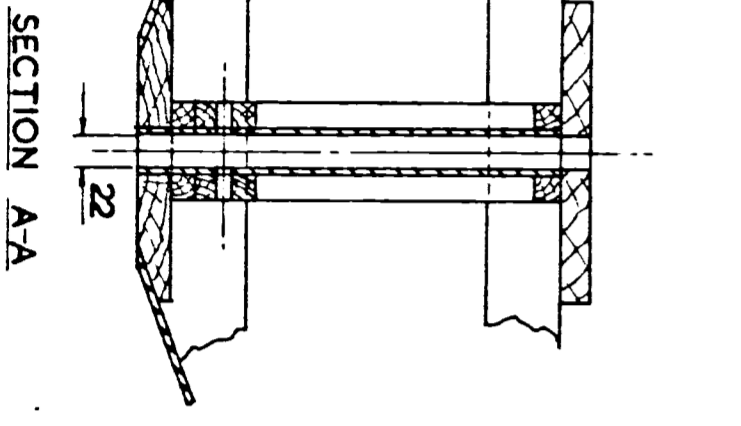
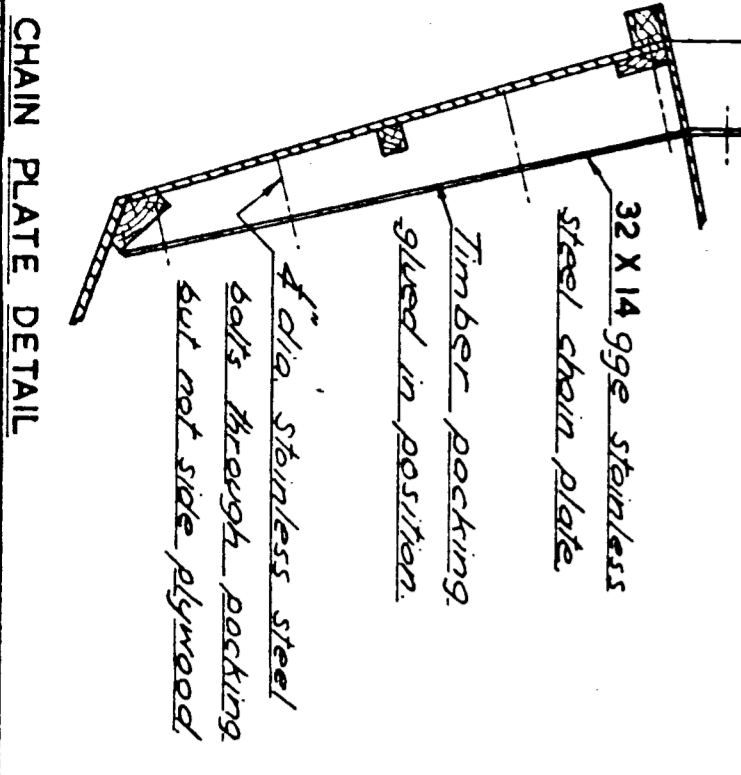
of 1/8" roller on chain plate



PART SECTIONED PLAN



KEEL DETAIL



CENTRE CASE DETAIL

All dimensions on this sheet are in millimetres.

For hull sections see Drg No 3

These drawings to be read in conjunction with Sharpie Manual

AUSTRALIAN LIGHTWEIGHT SHARPIE COUNCIL

LIGHTWEIGHT SHARPIE HULL

DRG No 2

DRN 3/1/2006  
MARKET ST 2