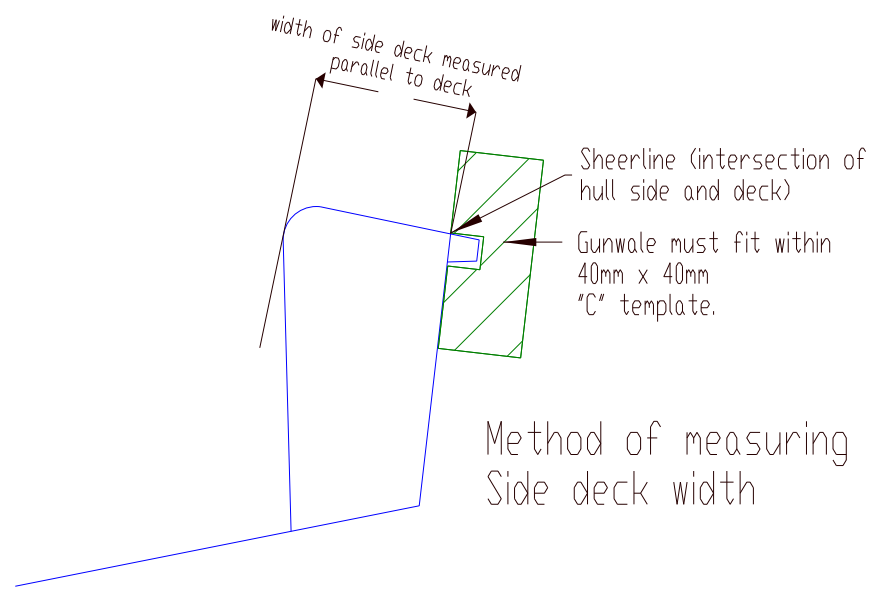
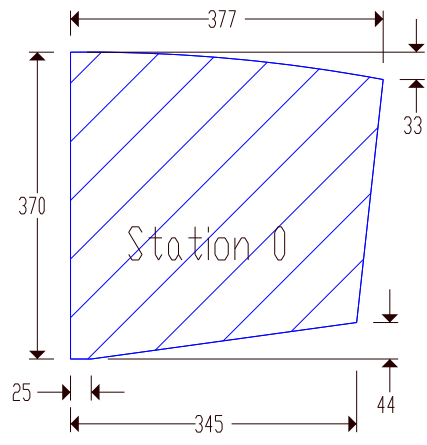
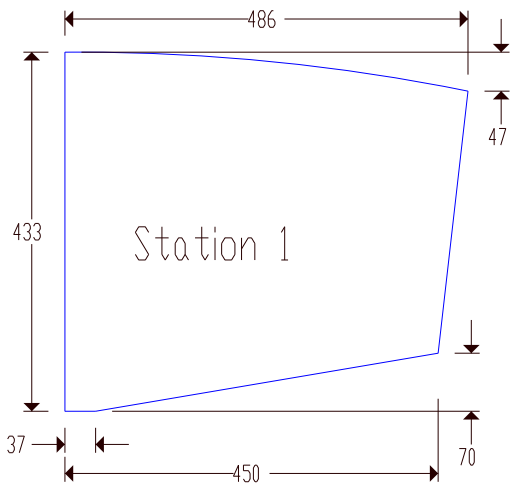
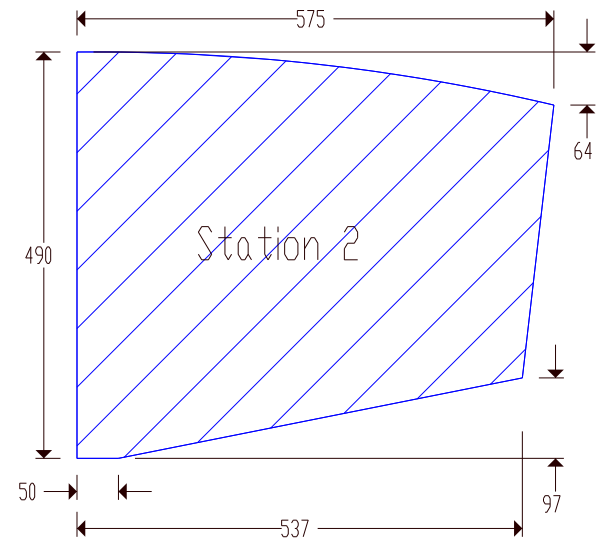
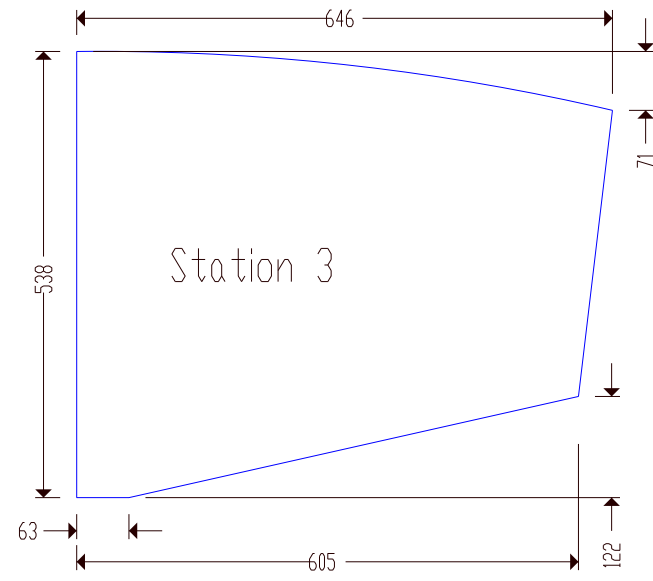
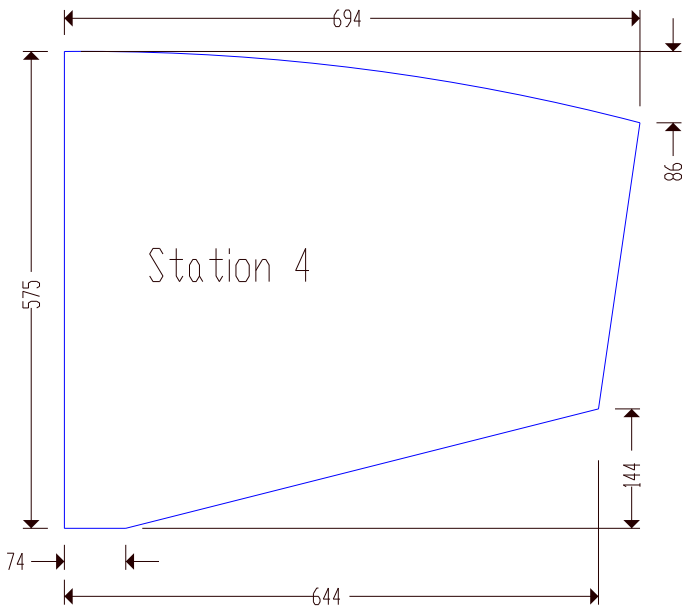
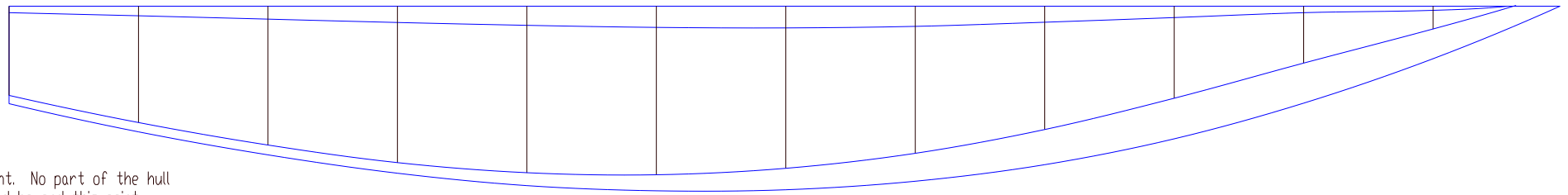
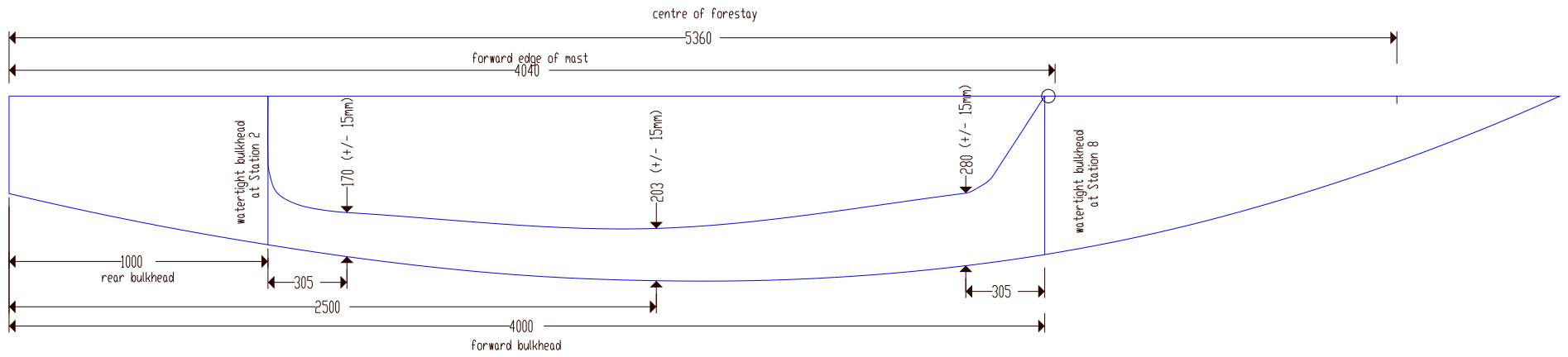


Sharpie Class Drawings Sheet 1  
 to be read in conjunction with the Australian  
 Sharpie Sailing Association Bylaws



Sharpie Class Drawings Sheet 2

to be read in conjunction with the Australian Sharpie Sailing Association Bylaws



Datum Point. No part of the hull may extend beyond this point. Transom may slope forward from this point to a maximum of 16mm to create a planing board.

